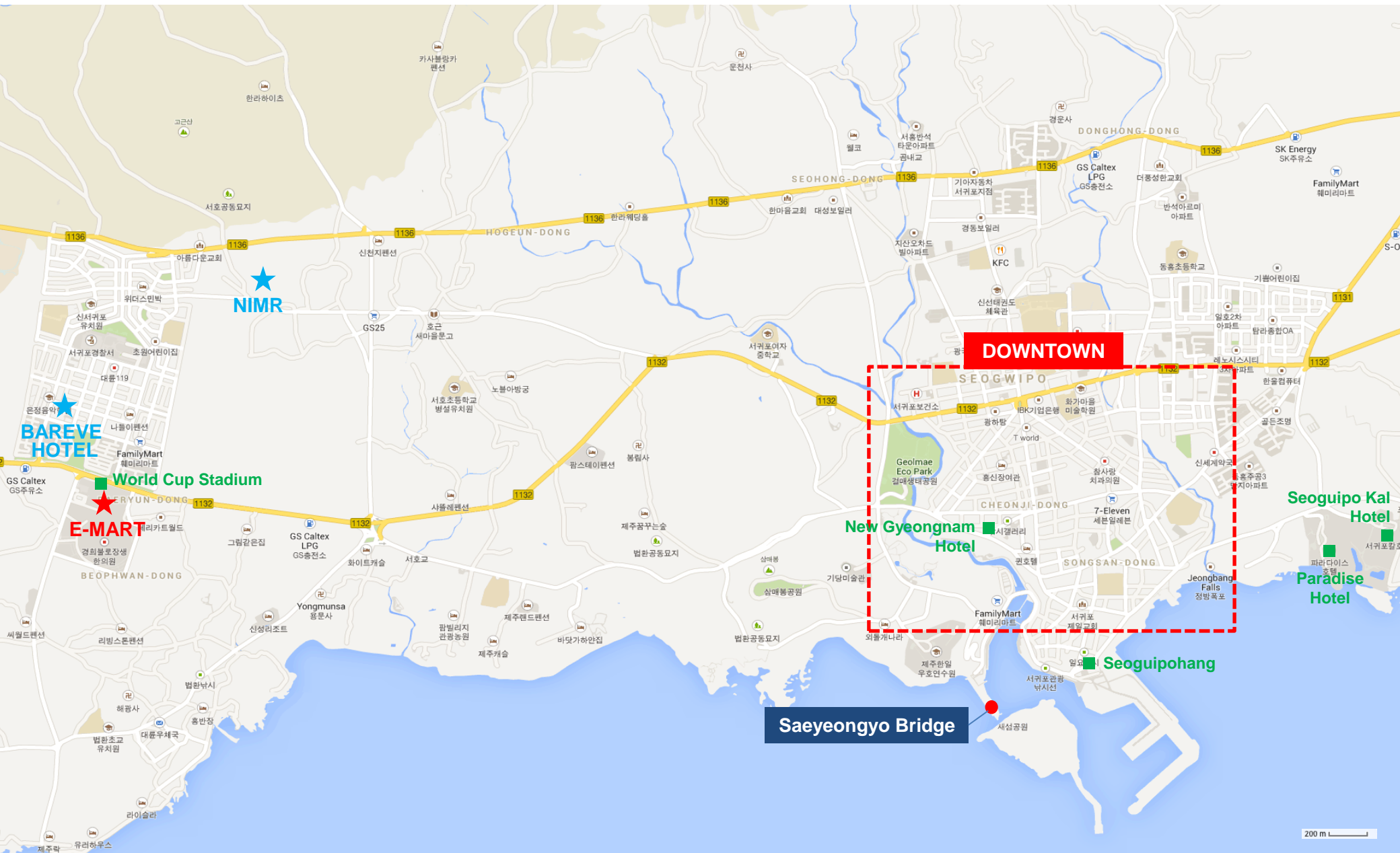


SEOGWIPO



NIMR

BAREVE HOTEL

World Cup Stadium

E-MART

DOWNTOWN

New Gyeongnam Hotel

Seogwipo Kal Paradise Hotel

Seogwipohang

Saeyonggyo Bridge

200 m

DOWNTOWN

**Olle Market
(traditional market)**

Arang Joel Street

Lee Jung-seop Street

Myeongdong-ro

Chilsimni Food Street

Cheonjiyeon Falls

**Tourist
Information
Center**

Saeyongyo Bridge

Lee Jung-seop Museum

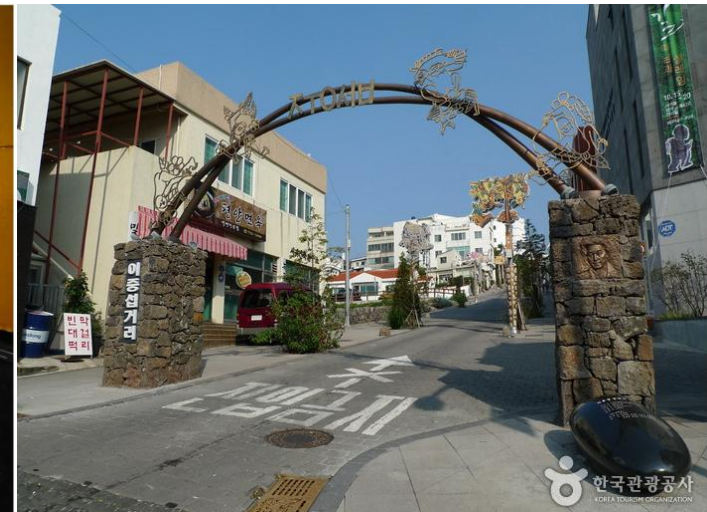
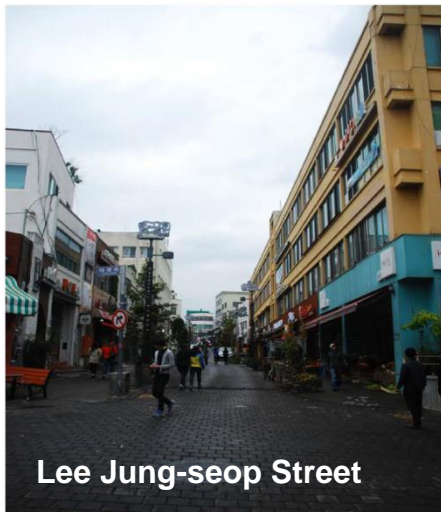
**New Gyeongnam
Hotel**



Seogwipo, at the southern tip of Korea, is an international destination with its beautiful landscape, unique culture, and abundant tourist attractions.

The Olle Market in downtown Seogwipo is a traditional market that is open daily. There are also lots of things to see and eat along Lee Joong-seop Street, Myeongdong Road, Arang Joeul Street, and Chilsimni Food Street.

Seogwipo offers what many consider to be the most beautiful nighttime scenes in Jeju. Enjoy a walk around Cheonjiyeon Waterfalls and Saeyeongyo Bridge after dinner.

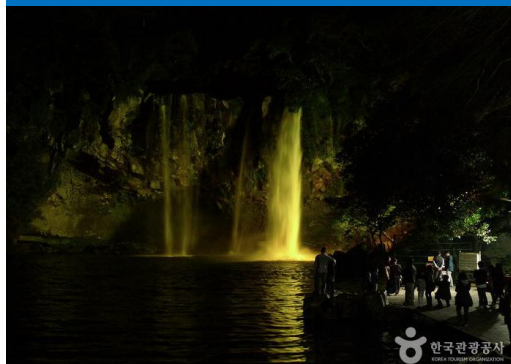


Lee Jung-seop Museum



- Here you can see Lee Jung-seop's paintings including 'Fantasy of Seogwipo' and 'Scenery with Seopseom Island', as well as letters to his beloved wife. To honor the great painter's life in Seogwipo and his enthusiasm for art, Seogwipo City founded the museum.
- Hours: 09:00 ~ 18:00 (summer season July-September 09:00 ~ 20:00) / Closed on Monday
- Fees: Adults 1,000 won
- Homepage: <http://jslee.seogwipo.go.kr>
- Phone: 82-64-760-3567

Cheonjiyeon Waterfalls



- Cheonjiyeon means a pond created by "the meeting sky and land." The white column of thunderous water falling from the cliff is a magnificent sight. It is 22 m in height and 12 m in width. Around the waterfall are Natural Monument #163 dampalsu trees which grow naturally here and temperate plants like camellia form a dense forest. Natural Monument #27 giant mottled eel, which is active only at night, also lives here.
- Hours: Sunrise ~ 22:00
- Fees: Adults 2,000 won
- Phone: 82-64-760-6304

Saeyeongyo Bridge



- Saeyeongyo is a bridge linking Seogwipo harbor to Saeseom Island. The bridge is shaped like a Jeju traditional boat, the Tewoo. The bridge is lit until 22:00, attracting many people here to take a walk and enjoy the beautiful sunsets.
- Phone: 82-64-760-3471

TRANSPORT

TAXI

Hotel ↔ Lee Jung-seop Museum

- 8,000~10,000 won
- 15~20 minutes
- Seogwipo Call Taxi
 - 82-64-732-4244
 - 82-64-762-0100

LIMOUSINE BUS (No. 600)

Routes

Airport → The Hotel → Yeomiji → Hana Hotel → Hyatt Hotel → Silla Hotel → Sweet Hotel → Lotte Hotel → Korea Condo → Korea National Tourism Organization → Seaes Hotel&Resort → Convention Center (ICC JEJU) → **World Cup Stadium** → New Gyeongnam Hotel → Seoguipohang → Paradise Hotel → Seoguipo Kal Hotel

World Cup Stadium ↔ New Gyeongnam Hotel

- 1,300 won
- 10 minutes